

Conference Description

The treatment and therapy for cancer is changing almost every day. The standard approach of IV chemotherapy is no longer to be assumed. Cellular therapies which target cancer cells are now being given in place of or in combination with chemotherapy. Many treatments are oral. The logistics of safely and efficiently administering these very expensive treatments must be addressed. Patient/families need to be aware of unique toxicities that are different from chemotherapy side effects. Health care providers need to know how to care for these patients and learn about novel approaches to supportive care. This conference will focus on cutting edge treatment and symptom management that is available for cancer patients in Hawaii.

Learner Outcomes

The learner will demonstrate increased knowledge of the safe handling and administration of chemotherapy and immunotherapy.

The learner will be able to utilize innovative strategies to manage the unique side effects and symptoms of immunotherapy in the treatment of cancer.

The learner will be able to identify how a health care provider in Hawaii may support the use of medicinal cannabis by oncology patients.

Silent Auction

Bring your checkbooks!
Bidding will end at 3:00 PM.
Fundraiser for Mana`olana, a project of the
ONS Hawaii (Oahu) Chapter

Schedule

7:00-7:45	Registration/Exhibits/Continental Breakfast
7:45-7:50	Conference Opening - Elizabeth Blasiak, DNP, RN, OCN
7:50-8:00	Welcome from ONS Hawaii (Oahu) President Cheri Uehara, FNP-BC, APRN-Rx, OCN
8:00-9:00	Drug Therapy for Cancer: Oncology Nurses Make it Safe (P) Martha Polovich, PhD, RN, AOCN
9:00-9:45	Beyond Chemotherapy: Immunotherapy Cancer Treatment in Hawaii (P) Ken Sumida, MD
9:45-10:15	Break/Visit Exhibits/Silent Auction
10:15-11:00	CAR-T Therapy and Its Impact on Hawaii Erin Mullane, BSN, DNP, FNP-BC (P)
11:00-11:45	Hidden Issues of Prescribing Cancer Treatment Marc Takemoto, PharmD (P)
11:45-1:15	Lunch/Awards Presentation/Exhibits
1:15-2:45	Managing Toxicities to Immunotherapy: Case Studies from Practice– Panel Elizabeth Blasiak, DNP, RN, OCN Erin Mullane, BSN, DNP, FNP-BC Ashley Springer, MSN, APRN-RX, AGPCNP-BC Dee Ann Omatsu, MS, APRN-Rx, PNP-BC Richard Shields, PharmD
2:45-3:00	Break/Exhibits/Silent Auction
3:00-3:45	The Oncology Nurse's Role in Supporting the Medicinal Cannabis Patient (P) Carey Clark, PhD, RN, AHN-BC, RYT
3:45-4:15	Hawaii and Medical Cannabis; What Clinicians Need to Know (P) Me Fuimaono-Poe, FNP-BC
4:15-4:30	Closing (P) Indicates Pharmacology content
4:30-5:15	ONS Chapter Annual Meeting (optional)

Program Handouts

Printed materials for the conference will not be distributed at the conference. Registered attendees will be able to download and print the material prior to the conference. Information on how to access the handout materials will be emailed to all registered attendees approximately 3-5 days prior to the conference. **Wi-Fi will be available in the hotel conference rooms and registration/exhibit areas.**

Continuing Education

For Nurses we are offering ANCC Contact Hours

Hawai'i Pacific Health designates this live activity for 6.0 contact hours for nurses. Nurses should only claim credit commensurate with the extent of their participation in the activity.

For Pharmacists we are offering continuing education credits

Hawai'i Pacific Health is accredited by the Accreditation Council for Pharmacy Education (ACPE) as a provider of continuing pharmacy education. This activity is assigned Universal Activity Number (UAN) 0587-0000-18-022-L04-P and is accredited for 6.0 hours for attendance at the entire CE session.

In support of improving patient care, Hawai'i Pacific Health is jointly accredited by the Accreditation Council for Continuing Medical Education (ACCME), the Accreditation Council for Pharmacy Education (ACPE), and the American Nurses Credentialing Center (ANCC), to provide continuing education for the healthcare team.



JOINTLY ACCREDITED PROVIDER*
INTERPROFESSIONAL CONTINUING EDUCATION

Registration

- ❖ Online with PayPal:
 - Available starting June 1, 2018
 - Go to the ONS website at <http://hawaii.vc.ons.org/>
- ❖ Register by mail with check:
 - Payable to: ONS Hawaii (Oahu) Chapter
 - Check must be post marked by 8/4/18. A fee of \$25 will be applied if postmarked after 8/4/18.
 - Check must include a valid email and phone number for registration.
 - Mail check to:
Elizabeth Blasiak
888 South King Street
Honolulu, Hawai'i 96813

Registration confirmation will be from PayPal if registering online or will be emailed for those who pay by check. A valid email must be printed clearly on the check.

Fees

- Current ONS member \$150.00
 - Non-member\$175.00
 - Student \$100.00
 - Additional late fee if payment postmarked after 8/4/18\$25.00
- Walk-ins are welcomed but are not guaranteed a meal or handouts.

Refund and Cancellations

Registrations are transferrable to an alternate without penalty. Full refund will be honored upon written or email notification by August 4, 2018 to ckotsubo@twc.com. The ONS Hawaii (Oahu) Chapter reserves the right to cancel this program, in which case full refunds will be made.

Hotel Information

Validated parking is \$8
Valet Parking is \$13

Hotel rooms will be available to participants at a reduced rate based on availability. Inquire during conference registration for discount code.

Planning Committee

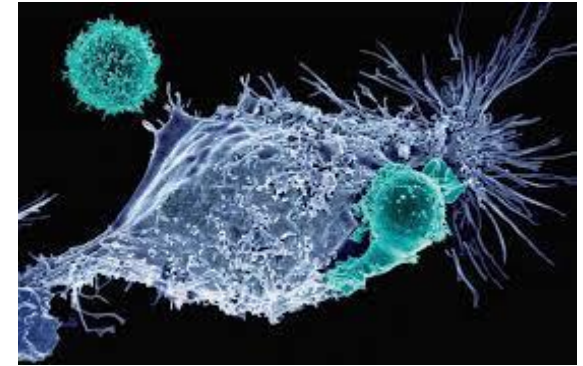
Elizabeth Blasiak, DNP, RN, OCN
(Conference Chair)

Christa Braun-Inglis, MS, APRN-Rx, AOCNP
Dorothy Coleman, MSN, RN
Francisco Conde, PhD, APRN-Rx, FAAN
Jennifer Dacumos, PharmD, MBA
Robin Easley, MNsc, ACNP-BC, OCN
Dianne Fochtman, PhD, CPNP, CPON
Brenda Hiromoto, MS, RN, OCN, WOCN
Carol Kotsubo, MS, MPH, APRN, CPON
(Conference Co-Chair)

Diane Nakagaki, BSN, RN, OCN, WOCN
Sharon Shigemasa, MS, RN
Tara Vaughn, BSN, RN

For Questions

Contact Carol Kotsubo via e-mail at ckotsubo@twc.com
or by phone at 808-226-7685



Novel Therapies: Cutting Edge Approaches to Cancer Care

ONCOLOGY NURSING SOCIETY
HAWAII (OAHU) CHAPTER
ANNUAL CONFERENCE

Friday, August 17, 2018
7:45am-4:30pm
Coral Ballrooms
Hilton Hawaiian Village
Honolulu, Hawaii